

**Interreg  
Danube Region**



Co-funded by  
the European Union



**Be Ready**

# **BeReady Local Action Plan for the Prevention and Mitigation of Risks and Vulnerabilities of Urban Heat Islands 2026–2028**

Ratiboř

## Local Action Plan for the Prevention and Mitigation of the Urban Heat Island Effect 2026–2028 – Municipality of Ratiboř

Contracting Authority: Municipality of Ratiboř

Represented by: Martin Žabčík, Mayor Author: Bc. Lucie Žabčíková

Collaborator: Martin Žabčík

Reviewers: DEX Innovation Centre

Technical Support: DEX Innovation Centre, Slovak University of Technology in Bratislava

Place and Date: Ratiboř, March 2026

## Obsah

INTRODUCTION .....	5
City context and approach to UHI .....	5
Vulnerability to the urban heat island phenomenon and risk assessment.....	7
Main conclusion of the vulnerability and risk assessment.....	9
Integration with the local strategic framework .....	12
IMPLEMENTATION PLAN – KEY ACTIVITIES AND MEASURES.....	13
MONITORING, EVALUATION AND REVIEW .....	19
Monitoring microclimatic conditions using weather stations.....	19
Implementation of the action plan.....	24

## SUMMARY

The Action Plan for the prevention and mitigation of risks and vulnerabilities related to urban heat islands represents the first systematic step by the municipality of Ratiboř towards a targeted solution to the impacts of extreme temperatures and ongoing climate change.

The document builds on the analytical outputs processed within the BeReady project and is based on a vulnerability and risk assessment that identified the main local factors affecting thermal comfort, environmental quality, and health risks. The vulnerability analysis pointed out that the character of the built environment and land use in the municipality creates specific microclimatic conditions. Increased heat stress was recorded particularly in areas with a higher proportion of paved surfaces, limited presence of mature greenery, and intensive daily use of public space. The assessment also confirmed the importance of natural and landscape elements around the municipality, which contribute to local cooling and mitigation of temperature extremes, although their effect is spatially uneven. These findings provide an important basis for targeting adaptation measures.

The document further emphasizes the sensitivity of selected population groups to the effects of extreme heat, especially seniors, children, and people with health limitations. In the conditions of a smaller municipality, where daily activities take place in a significantly shared space, deteriorated thermal comfort can have direct impacts on the quality of life, health status, and the use of public spaces. The analysis also identified institutional and capacity constraints typical for smaller local governments, especially in terms of financial resources, personnel capacities, and technical planning.

The Action Plan responds to these findings through an interconnected set of spatial, organizational, and information measures. Spatial measures focus on improving the microclimatic conditions of the residential environment, in particular by supporting green infrastructure, strengthening shading, modifying public spaces, and sensitive management of paved areas. Organizational measures aim to systematically integrate the issue of heat stress into the decision-making and planning processes of the municipality. Information and communication measures aim to raise residents' awareness of the risks associated with extreme temperatures and encourage their involvement in adaptation activities.

The Action Plan is designed as an operational and flexible document that allows for the gradual implementation of measures in accordance with the real possibilities and needs of the municipality. The document includes a framework for implementation, monitoring, and evaluation, which ensures transparent management, continuous evaluation of the effectiveness of individual steps, and the possibility of their modification in response to the development of climatic and local conditions. Thanks to this approach, the Action Plan creates prerequisites for long-term, systematic, and sustainable management of risks

associated with heat extremes. Its implementation will contribute to increasing the municipality's resilience to the impacts of climate change, improving the quality of public space, and protecting the health and well-being of the residents.

## INTRODUCTION

### City context and approach to UHI

The municipality of Ratiboř is located in the Zlín Region, approximately 7 km west of the town of Vsetín, in the valley of the Ratibořka stream on the eastern edge of the Hostýnské vrchy (Hostýn Hills). The altitude of the municipality is 343 m; the highest peak is Drastihlava at 695 m. The cadastral area of the municipality is very rugged, with forests covering almost 57%. The village is built along a second-class road that connects to the expressway linking to the town of Vsetín. The surrounding hills and forests give this village an unmistakable character; several smaller valleys are popular places for the construction of family houses.

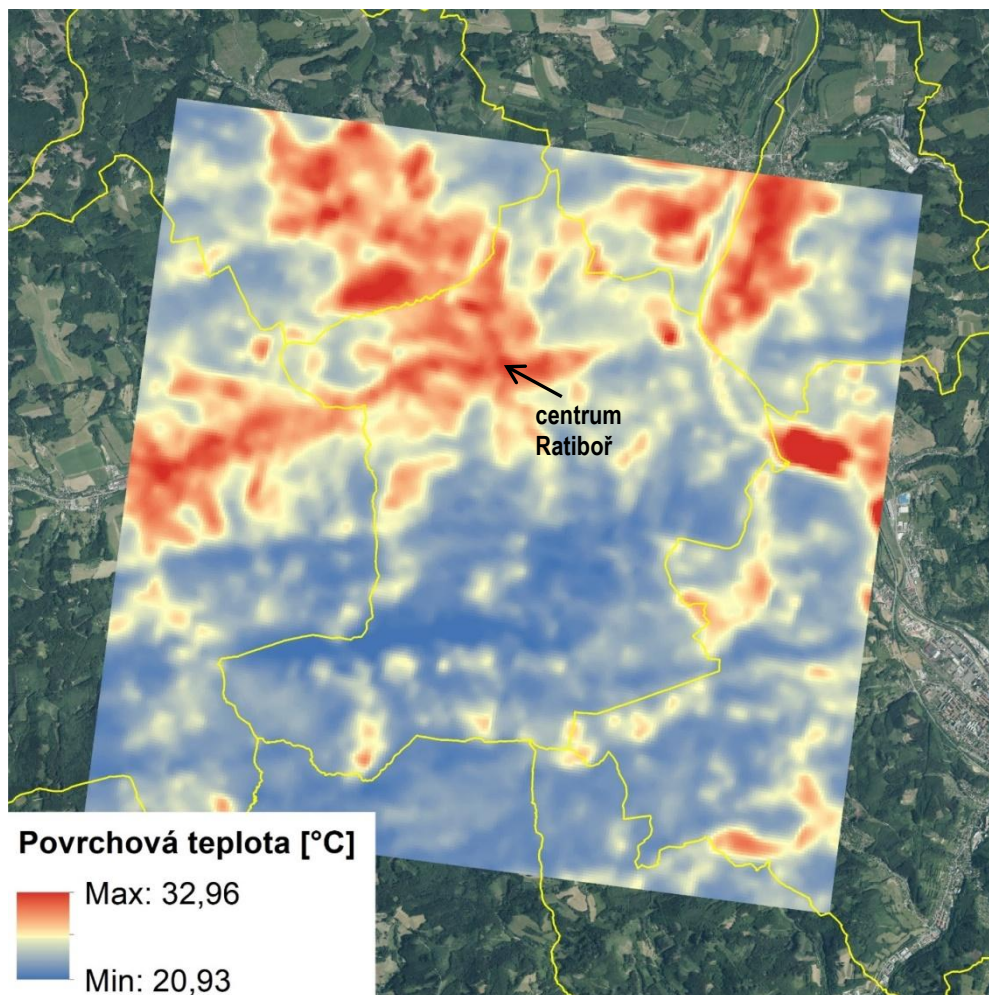


Fig. 1 Satellite thermal image showing the Ratiboř cadastral area, August 12, 2024, 11:38 CEST

The municipality of Ratiboř is located in the rugged terrain of the Vizovice Highlands, which currently mitigates extreme temperatures compared to lowland urban areas; however, climate scenario projections indicate a significant increase in heat stress in this area as well. According to climate development scenarios (Fig. 2), the average daily air temperature in Ratiboř increased from values around 7.4 °C in the period 1991–2020 to approximately 8.7 °C in the period 2023–2038, and by the end of the 21st century it may reach values exceeding 10.5 °C. At the same time, there is a significant increase in maximum temperatures during the summer period, when the average maximum temperature in July may increase from approximately 23.5 °C to almost 28 °C by the period 2075–2090.

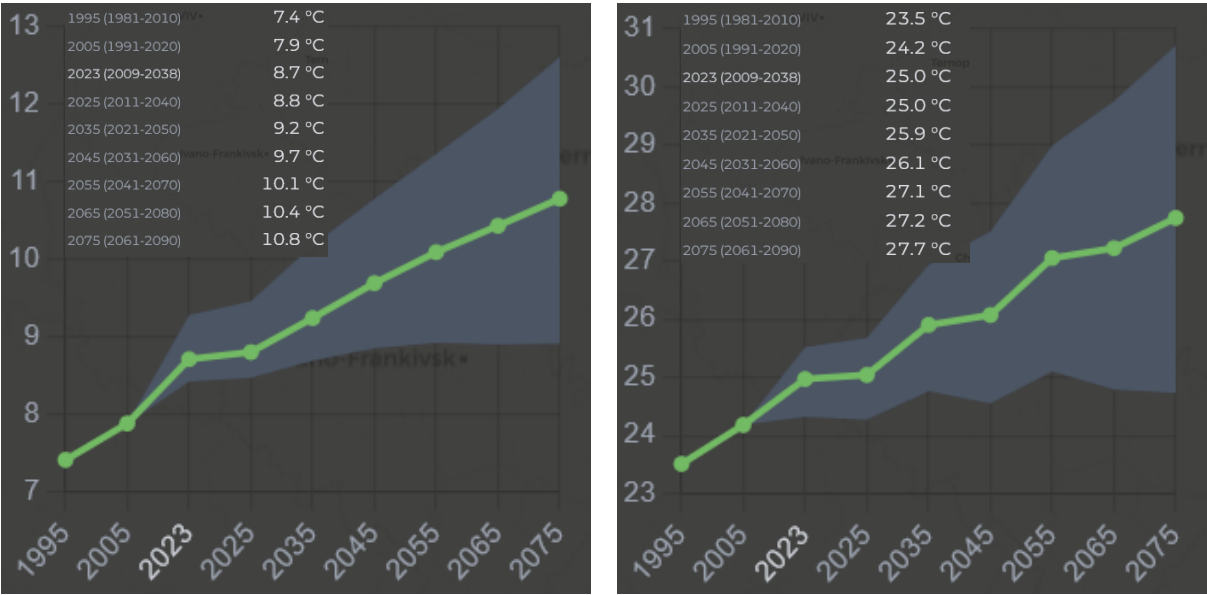


Fig. 2 Climate development scenarios for Ratiboř: development of average daily air temperature (right) and development of maximum air temperature in July (left) - www.climrisk.cz

A particularly significant impact of climate change is the increase in the number of tropical days and nights (Fig. 3). While in the reference period 1991–2020 there were on average fewer than 5 tropical days per year in Ratiboř, projections indicate an increase to more than 20 days by the middle of the century and up to approximately 30 tropical days per year by the end of the 21st century. Even more pronounced changes are evident for tropical nights, which were previously rather exceptional in this area. In the future, however, a significant increase is expected, with their number reaching several units to dozens of nights per year by the end of the century.

These changes represent a significant challenge for local residents, agriculture, and the technical infrastructure of the municipality. The increased occurrence of tropical days and nights limits natural nighttime cooling, increases heat stress for residents, and can lead to higher energy consumption for cooling buildings. Although Ratiboř does not exhibit the

characteristics of a significant urban heat island, the combination of rising temperatures, changes in air circulation in valleys, and limited shading in the built-up parts of the municipality highlights the need for adaptation measures, particularly in the area of green infrastructure, water management, and modifications to public spaces.

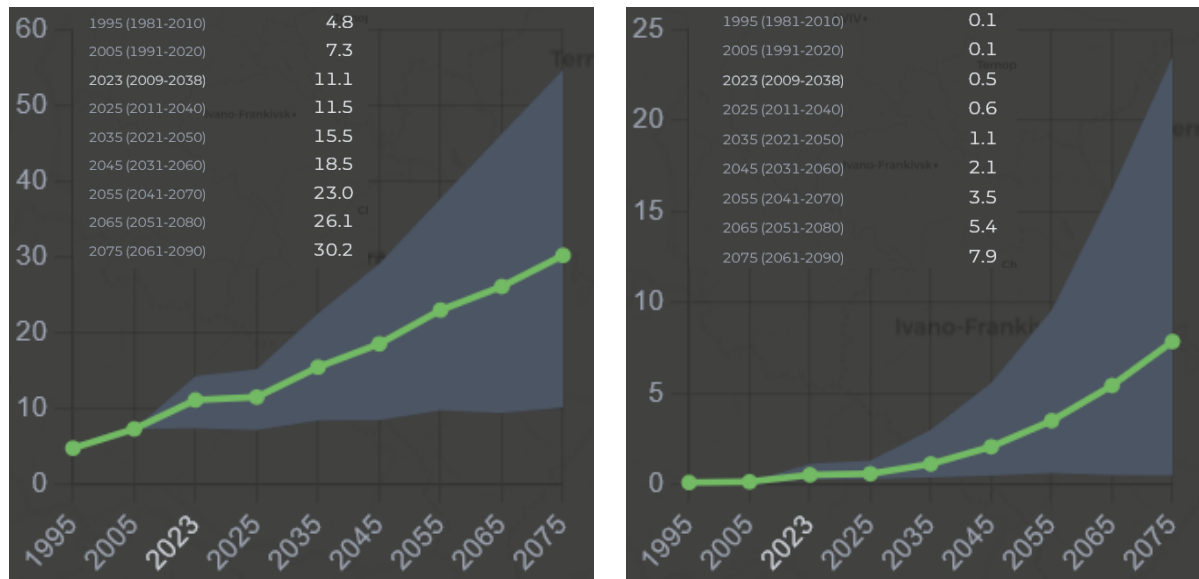


Fig. 3 Climate development scenarios for Ratiboř: development of the number of tropical days (right) and development of the number of tropical nights (left) - [www.climrisk.cz](http://www.climrisk.cz)

### Vulnerability to the urban heat island phenomenon and risk assessment

The assessment of vulnerability and risks related to the urban heat island phenomenon in the municipality of Ratiboř was carried out within the BeReady project (WP2) using a common methodology based on four dimensions of vulnerability: exposure, sensitivity, preparedness, and adaptive capacity. Based on the analytical outputs, the following key conclusions were identified:

- **Identified heat hotspots**

Analysis of surface and air temperatures identified a significant local heat hotspot in the central part of the Ratiboř municipality, characterized by a high proportion of impermeable surfaces (asphalt, paved areas) and minimal vegetation representation. Thermal images and data from local meteorological stations confirm significantly higher temperatures in this part of the municipality compared to more vegetated locations, even outside periods of extreme heat (Fig. 4-6).

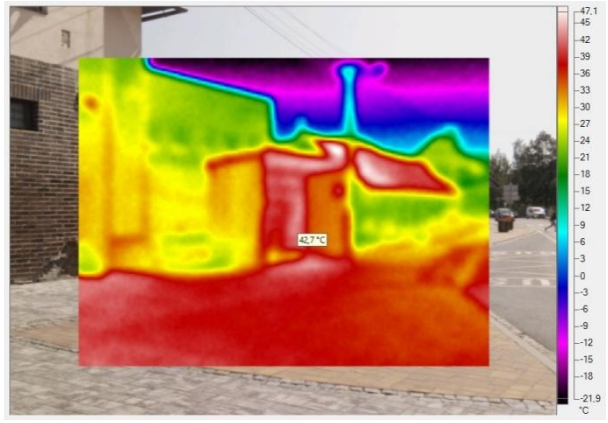


Fig. 4 Surface temperature (right) at the bus stop (left) in the center of Ratiboř - August 2024

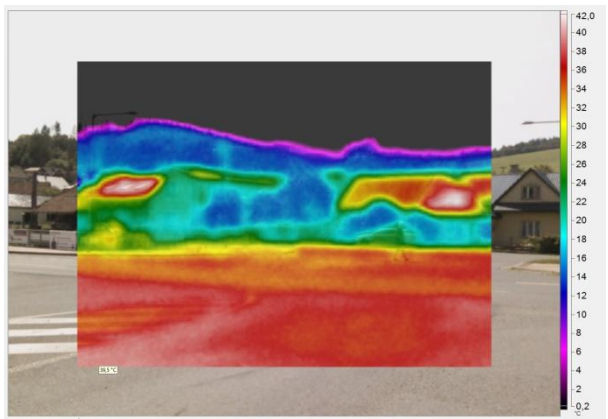


Fig. 5 Surface temperature (left) on the bridge (left) in front of the Ratiboř Municipal Office - August 2024

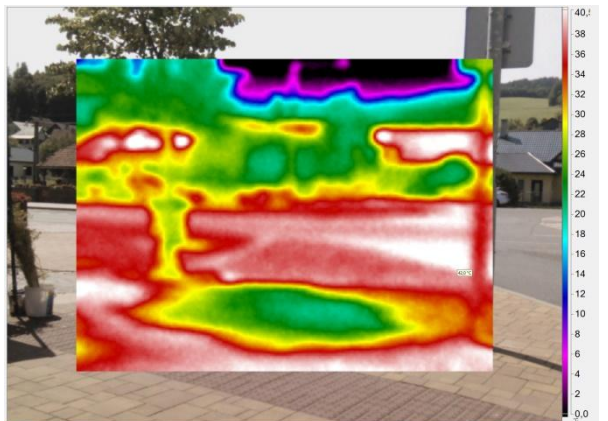


Fig. 6 Surface temperature (right) in the center of the village (left) - August 2024

- **Priority areas exposed to UHI effects**

The central part of the municipality with intensive daily use, where heat stress, movement of residents, and lack of shading accumulate, was identified as a priority area exposed to the effects of the urban heat island. This area consistently shows higher surface and air temperatures compared to locations around the kindergarten, where permeable and vegetation elements prevail.

- **Sensitive population groups**

Hodnocení zranitelnosti identifikovalo zvýšenou citlivost vybraných skupin obyvatelstva vůči tepelnému stresu, zejména seniorů, dětí a osob se zdravotními omezeními. Analýza vychází z demografických dat obce a z obecně uznávaných vztahů mezi extrémními teplotami a zdravotními dopady, které byly v rámci projektu BeReady použity jako součást metodického rámce hodnocení citlivosti.

- **Vulnerable public spaces and infrastructure**

Mezi ohrožené prvky byly zařazeny veřejné prostory v centru obce, které jsou charakteristické vysokým podílem zpevněných ploch, absencí stromového patra a intenzivním využíváním v letním období. Tyto prostory představují kombinaci vysoké expozice a vysoké citlivosti, což zvyšuje riziko negativních dopadů tepelné zátěže na uživatele i technickou infrastrukturu.

- **Limited adaptive capacity in the context of a small municipality**

The assessment draws attention to the limited institutional and technical adaptive capacity of a small municipality, particularly in terms of systematic monitoring, planning, and implementation of comprehensive adaptation measures. At the same time, however, a significant improvement in the municipality's knowledge base was identified thanks to the installation of local meteorological stations, participatory workshops, and the involvement of local stakeholders within the BeReady project.

### **Main conclusion of the vulnerability and risk assessment**

The vulnerability assessment of the Ratiboř municipality confirmed that even in the conditions of a small municipality, there are locations with increased heat stress. The highest surface temperatures were identified in the central part of the municipality with a high proportion of paved and impermeable surfaces, while vegetation-covered areas show more favorable microclimatic conditions. The results show that surface characteristics, shading, and spatial arrangement have a fundamental influence on the local temperature regime. From the residents' perspective, children and other vulnerable groups are particularly sensitive to extreme temperatures.

The overall assessment confirms that heat stress is a relevant topic for adaptation for the municipality. Although the phenomenon is not comparable to that in large cities, the

identified effects and projected climate trends justify a preventive, systematic approach by the municipality.

The following intervention priorities were identified in the conditions of the Ratiboř municipality:

- **Priority 1: Locations with the highest heat stress and intensive use.** The highest priority is given to areas in the central part of the municipality and other frequented public spaces with a high proportion of paved and impermeable surfaces. These locations show increased heat exposure and are simultaneously places of daily movement of residents, which amplifies potential impacts on thermal comfort and public health.
- **Priority 2: Spaces used by vulnerable population groups.** Increased attention should be paid to locations associated with the stay of sensitive groups, especially children and seniors. In the case of Ratiboř, this is primarily the surroundings of the kindergarten and other public spaces such as public transport stops and spaces in front of the municipal office, where a combination of high surface temperatures and insufficient shading can increase health risks.
- **Priority 3: Areas with a high proportion of impermeable surfaces and limited vegetation.** A medium-term priority and the search for appropriate measures are areas with a low representation of greenery, especially transport and technical infrastructure, parking, and handling areas. The character of these surfaces significantly contributes to heat accumulation and the deterioration of local microclimatic conditions.
- **Priority 4: Material and structural factors affecting heat stress.** The structural and material properties of surfaces and buildings are also a priority area for interventions. Measurement results show the potential of adaptation measures based on the use of light and reflective materials, increasing shading, and reducing the overheating of exposed surfaces.
- **Priority 5: Institutional and administrative capacities of the municipality.** The priority is to strengthen the municipality's capacities in planning and managing adaptation measures. This includes the systematic integration of heat stress into investment and project preparation, gradual incorporation of thermal comfort principles into decision-making processes, and raising awareness among residents.



# VESNICE RATIBOŘ

ČESKÁ REPUBLIKA

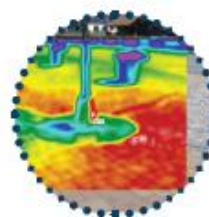
POČET OBYVATEL: 1 835  
ROZLOHA: 18,75 km<sup>2</sup>  
HDP na obyvatele: 22 616,12 €



## EXPOZICE BUDOV A JEJICH OKOLÍ



## CITLIVOST MATERIÁLŮ



## ZALESNĚNÍ



## PROPUSTNOST POVRCHŮ



## INTENZITA MĚSTSKÉHO TEPELNÉHO OSTROVA

- červená – vysoká intenzita
- béžová – střední intenzita
- modrá – nízká intenzita



## PŘIPRAVENOST A ADAPTAČNÍ SCHOPNOSTI

1. Expertní hodnocení
3. Měření a satelitní snímání
2. Modelování/simulace
4. Průzkumy

### CO JE MĚSTSKÝ TEPELNÝ OSTROV (UHI)?

Městský tepelný ostrov vzniká, když je v městské oblasti vyšší teplota než v okolních venkovských oblastech.



Tento projekt je podporován programem Interreg Dunajský region, spolufinancovaným Evropskou unií (2021–2027).  
Obsah byl vytvořen na základě výsledků zpráv D1.3.1 z hodnocení rizik UHI, obec Ratiboř.

Fig. 7 Output from the vulnerability assessment of the municipality of Ratiboř

## [Link to municipal strategic and planning documents](#)

The Action Plan is designed in accordance with the existing strategic and planning documents of the Ratiboř municipality, especially the municipal spatial plan. The proposed measures respect the spatial development concept and complement it with the aspect of climate change adaptation and reduction of heat stress. The Action Plan thus does not represent an independent development strategy, but a thematically related document that supports sustainable municipal development, environmental quality protection, and increases the settlement's resilience to extreme temperatures.

## [Integration with the local strategic framework](#)

The Action Plan for the prevention and mitigation of the urban heat island (UHI) phenomenon did not emerge as an isolated document but represents a logical outcome and linking of several levels of strategic planning and practical testing. The plan's concept is firmly anchored in the following documents and initiatives:

**Starting points and inspiration from the Be Ready project:** Activities implemented within the international Be Ready project became the springboard for the creation of this action plan. A key role was played in particular by:

- **Vulnerability and risk assessment (WP2):** Provided the municipality with objective data on local climate trends, identified temperature hotspots (e.g., in the center of the municipality), and defined the most vulnerable population groups.
- **Pilot testing of "Urban Acupuncture":** A fundamental inspiration for defining specific physical measures in this plan was the successful installation and evaluation of a pilot bioclimatic bus stop. Experiences from its operation and feedback from citizens directly shaped proposals for the further development of blue-green infrastructure in the municipality.

**Linkage with strategic documents of the Zlín Region:** The proposed measures respond to broader regional priorities and are in line with the objectives of the **Strategy for the Development of the Zlín Region 2030**. The Ratiboř Action Plan actively contributes to fulfilling regional goals in the areas of:

- **Environmental protection and climate change adaptation:** Through measures aimed at retaining water in the landscape, promoting permeable surfaces, and developing green infrastructure.
- **Strengthening regional resilience:** The plan's activities are fully compatible with the region's efforts to build so-called smart and resilient municipalities capable of facing extreme weather events and improving the quality of life for residents.

**Integration with documents and regulations of the Ratiboř municipality:** At the local level, the action plan is closely linked to the main tools for managing the municipality's

development, ensuring that measures against UHI will be systematically considered in practice:

- **Spatial Plan of the Ratiboř municipality:** The measures proposed in this action plan fully respect the valid Spatial Plan (including Amendment No. 1 of July 30, 2025) and complement it with principles of microclimate protection. This includes, for example, the protection and expansion of green areas (e.g., implementation of insulating and landscape greenery) and regulating the proportion of paved surfaces.
- **Strategic development document of the municipality:** The Action Plan directly follows the municipality's defined visions and priorities in the field of sustainable development, energy efficiency, and environmental care. The proposed investment (e.g., village square renewal, water retention) and non-investment (training, awareness-raising) measures thus become an integral part of Ratiboř's long-term strategic management.

This integrated approach ensures that the Action Plan is not just a theoretical document, but a functional tool supported by real data (Be Ready), aligned with regional support (Zlín Region), and firmly embedded in the daily agenda and planning of the municipality (Spatial Plan, Strategic Plan).

## IMPLEMENTATION PLAN – KEY ACTIVITIES AND MEASURES

The proposed key activities and measures of the Ratiboř municipality's action plan represent a comprehensive implementation framework focused on preventing and mitigating risks associated with the urban heat island effect in the period 2026–2028. This framework is structured into three interconnected areas – implementation, institutional, and educational – which together enable a systematic and coordinated fulfillment of the municipality's strategic goals in the field of climate change adaptation.

At the implementation level, the proposed key activities include specific spatial measures to reduce heat stress and improve microclimatic conditions in the built-up area of the municipality. This mainly involves optimizing the pilot bioclimatic bus stop, replacing impermeable surfaces with permeable materials, systematic planting of trees and shrubs, expansion of the village square with the integration of water features, supporting water retention in the landscape, and creating a natural garden at the kindergarten. These measures directly contribute to reducing residents' exposure to extreme temperatures, improving water retention, and increasing the ecological stability of the territory.

The institutional area of key activities focuses on strengthening the municipality's adaptive capacity. It includes professional training for municipal office employees, introducing thermal comfort standards for public spaces, and systematically integrating adaptation principles into spatial planning and new housing construction. This creates a stable

framework for long-term consideration of climate risks in the municipality's decision-making processes and for ensuring the sustainability of the proposed interventions.

Educational and communication measures support the awareness and active involvement of residents. This includes the installation of educational boards, the implementation of educational programs, the introduction of an early warning system for extreme temperatures, and the creation of a community maintenance and green adoption program. These activities strengthen awareness of climate change impacts, promote responsible behavior, and contribute to building local resilience.

The proposed key activities and measures are designed to be realistically feasible within the existing institutional, financial, and planning capacities of the Ratiboř municipality, while also allowing for their gradual expansion and modernization. The framework also includes principles of continuous monitoring, evaluation, and updating, which ensure transparent, effective, and long-term sustainable implementation in accordance with the municipality's adaptation strategy.

No.	Key action	Responsible department	Supporting entities	Budget/CZK	Timeline	Key indicators	Sources of verification
<b>Objective 1: Reduce the heat load in critical zones of the urban heat island</b>							
1	Optimization and maintenance of the pilot bioclimatic bus stop (waste bin, lighting, roofing, greenery)	Municipality Ratiboř	citizens of the municipality	50,000	2026	pilot bioclimatic bus stop	FB, municipality website
2	Replacement of impermeable surfaces - parking areas and sidewalks for permeable ones	Municipality Ratiboř	municipal council	20,000,000	2026-2030	XY m <sup>2</sup>	strategic plan of the Ratiboř municipality
3	Planting of traditional fruit tree varieties, 2nd stage	Municipality Ratiboř	ČEZ Foundation, citizens of Ratiboř municipality	150,000	2026	55 pieces of traditional fruit varieties	municipality website, news/projects
4	Planting of a tree alley within the parking lot	Municipality Ratiboř	municipal council	300,000	2027	20 pieces of deciduous trees	municipality website, news/projects

	at the upper end						
5	Greenery Municipality of Ratiboř - addition of greenery within the built-up area of the municipality	Municipality Ratiboř	municipal council	1,000,000	2026	35 pcs of deciduous trees and 250 pcs of shrubs	municipality website, news
6	Expansion of the Ratiboř village center square - permeable surfaces, greenery, water features	Municipality Ratiboř	municipal council	5,000,000	2027-2028	water feature - fountain, deciduous trees, permeable surface	municipality website, news/projects
7	Water retention in the landscape	Municipality Ratiboř	municipal council	1,400,000	2027	4 ponds in the municipality's outskirts (extravilán)	municipality website, news/projects
8	Natural style garden at the kindergarten	Municipality Ratiboř	municipal council	1,500,000	2027	deciduous trees, shrubs, beetle banks, insect hotels, herb beds	municipality website, news/projects
<b>No.</b>	<b>Key action</b>	<b>Responsible department</b>	<b>Supporting entities</b>	<b>Budget/CZK</b>	<b>Timeline</b>	<b>Key indicators</b>	<b>Sources of verification</b>

**Objective 2: Strengthen institutional capacity for climate change adaptation**

<b>9</b>	Online training of relevant employees of the Ratiboř municipality in the field of UHI mitigation and adaptation	Municipality Ratiboř	project team	To be specified	2026	3 employees complete the BeReady virtual training program	Report from this activity
<b>10</b>	Introduction of thermal comfort standards for public spaces (PU)	Municipality Ratiboř	Municipal council, designers, landscape architects	To be specified	From 2026 continuously	Proportion of shaded areas; number of trees; types of surfaces	Study; project documentation; implementation
<b>11</b>	Consideration of heat stress in new residential areas (BI, SU, SV)	Municipality Ratiboř	Municipal council, developers, designers	No direct costs / organizational measure	2026–2028	Number of projects with adaptation elements; retention measures	Municipality statements; construction documentation
<b>12</b>	Integration of heat stress issues into spatial planning	Municipality Ratiboř	Land-use planners, technical consultants	No direct costs / systemic measure	Continuously	Application of thermal comfort criteria in documents	Spatial plan amendments; internal methodologies; meeting minutes

13	Evaluation of data from local weather stations and measurement of the impacts of pilot measures on UHI.	Municipality Ratiboř	STUBA, DEX IC	To be specified	2025 - 2026	Comparative data analysis before and after measure implementation	Report
No.	Key action	Responsible department	Supporting entities	Budget/CZK	Timeline	Key indicators	Sources of verification
<b>Objective 3: Raise public awareness and encourage behavioral changes</b>							
14	Optimization and maintenance of the pilot bioclimatic bus stop (information/educational board)	Municipality Ratiboř	Municipal council	10,000	2026	1 piece of board	municipality website, news/projects
15	Early warning system via the Digiregion app for vulnerable groups during extreme temperatures	Municipality Ratiboř	Municipal Council, Digiregion	?	2027	notifications	municipality website, news/projects

16	Education on the pilot stop - panel explaining the principle of the adiabatic system operation	Municipality Ratiboř	Municipal Council, scientific partner of the project	5,000	2026	educated residents of Ratiboř municipality	municipality website, news/projects
17	Community maintenance and green adoption program	Municipality Ratiboř	Municipal Council	?	2027	community residents of Ratiboř municipality	municipality website, news/projects
18	Thematic boards as part of the Ratiboř village center square expansion	Municipality Ratiboř	Municipal Council, scientific partner of the project	10,000	2027-2028	2 pieces of boards	municipality website, news/projects
19	Education of children at Ratiboř Kindergarten and Primary School	Municipality Ratiboř	Municipal Council, scientific partner of the project	10,000	2026	2 pieces of boards	municipality website, news/projects

## MONITORING, EVALUATION AND REVIEW

### Monitoring microclimatic conditions using weather stations

Monitoring the impacts of adaptation measures in the Ratiboř municipality also includes tracking microclimatic conditions through local meteorological stations. This monitoring allows continuous tracking of the development of temperature conditions in different types of environments in the municipality and provides supplementary data for evaluating the effectiveness of implemented measures aimed at reducing heat stress.

Within the project activities, two automatic meteorological stations were installed in the municipality, which continuously record selected meteorological parameters, especially air temperature, relative humidity, and other basic climatic characteristics. The stations are part of the AllMeteo meteorological monitoring system and allow continuous data storage and evaluation.

One weather station is located in the central part of Ratiboř (Fig. 8) in a location identified during the urban heat island (UHI) analysis as an area with higher heat stress. This location is characterized by a higher proportion of paved surfaces and limited vegetation, which can contribute to heat accumulation, especially during the summer months.

The second weather station is installed in the garden of the Ratiboř Kindergarten (Fig. 11), which represents an environment with a higher proportion of greenery and permeable surfaces. This location serves as a reference point, allowing for a comparison of microclimatic conditions between the more built-up central area and an environment with a higher degree of vegetation.

The placement of the weather stations is based on the thermal load analysis of the territory conducted within the project and described in Document D1.3.1 UHI Assessment Ratiboř. The installation of measuring devices allows the verification of model and satellite analyses using real local data and provides a basis for long-term monitoring of the development of microclimatic conditions in the municipality.

The first set of data was obtained during the summer months of 2025 when continuous measurement of temperature and other climatic parameters took place at both locations. This data represents a reference measurement set for the period before the implementation of some adaptation measures planned within the action plan. Therefore, this document primarily provides information on the location of the weather stations and the basic setup for monitoring microclimatic conditions in the municipality.

The document includes map materials showing the location of both weather stations within the municipality's territory. These materials serve to illustrate the monitored locations and to provide a better understanding of the differences between the types of environments where measurements take place.

Some planned adaptation measures, such as the installation of adiabatic elements at bus stops, were not implemented until the autumn months of 2025. For this reason, it is not yet possible to conduct a comparable evaluation of their impact on microclimatic conditions during the summer period.

A comprehensive evaluation of the data from the weather stations will only be possible after the end of the summer season in 2026 when a comparable dataset from the summer months of 2025 and 2026 will be available. This comparison will allow a better assessment of

the development of microclimatic conditions in the monitored locations and the potential impact of the implemented adaptation measures.

The data from the weather stations will thus serve as one of the bases for future evaluations of the effectiveness of the measures implemented under the action plan and can also be used in planning further steps aimed at improving microclimatic conditions in the municipality.

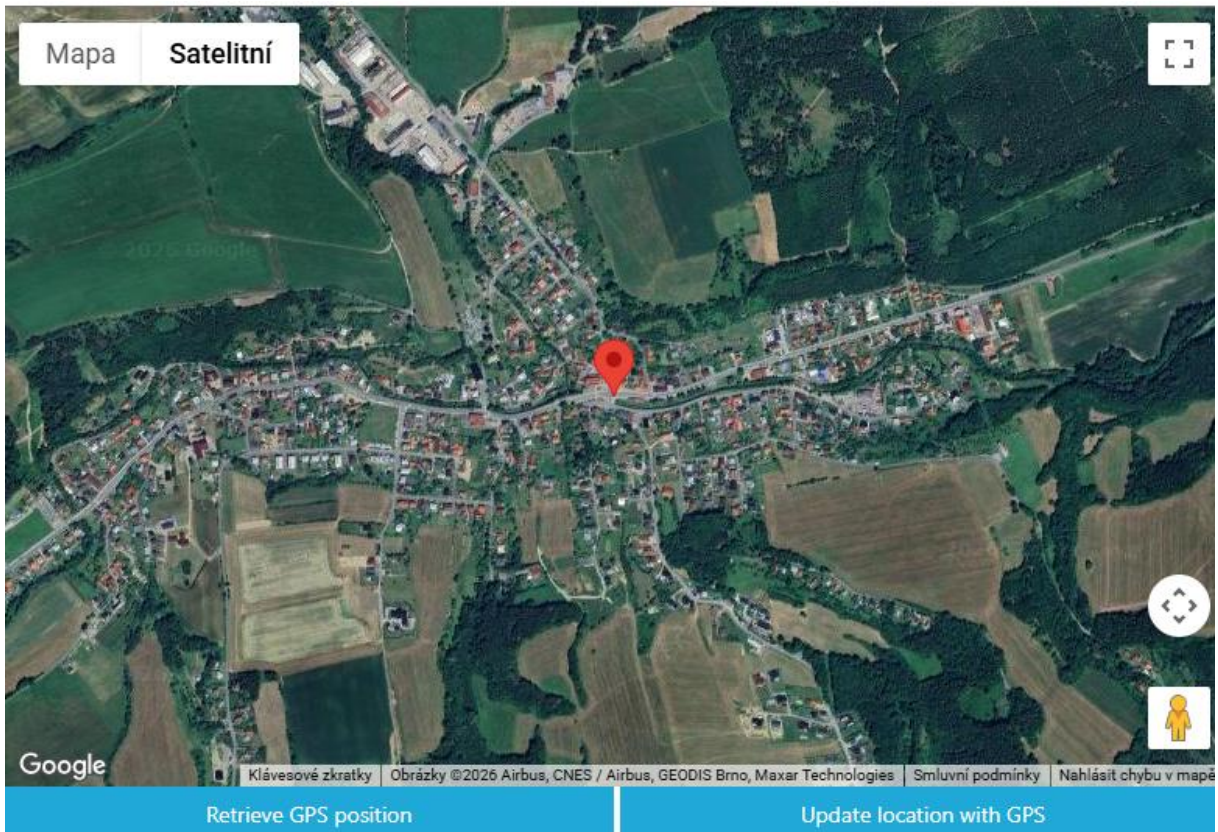


Fig. 8 Location of the weather station in the center of Ratiboř

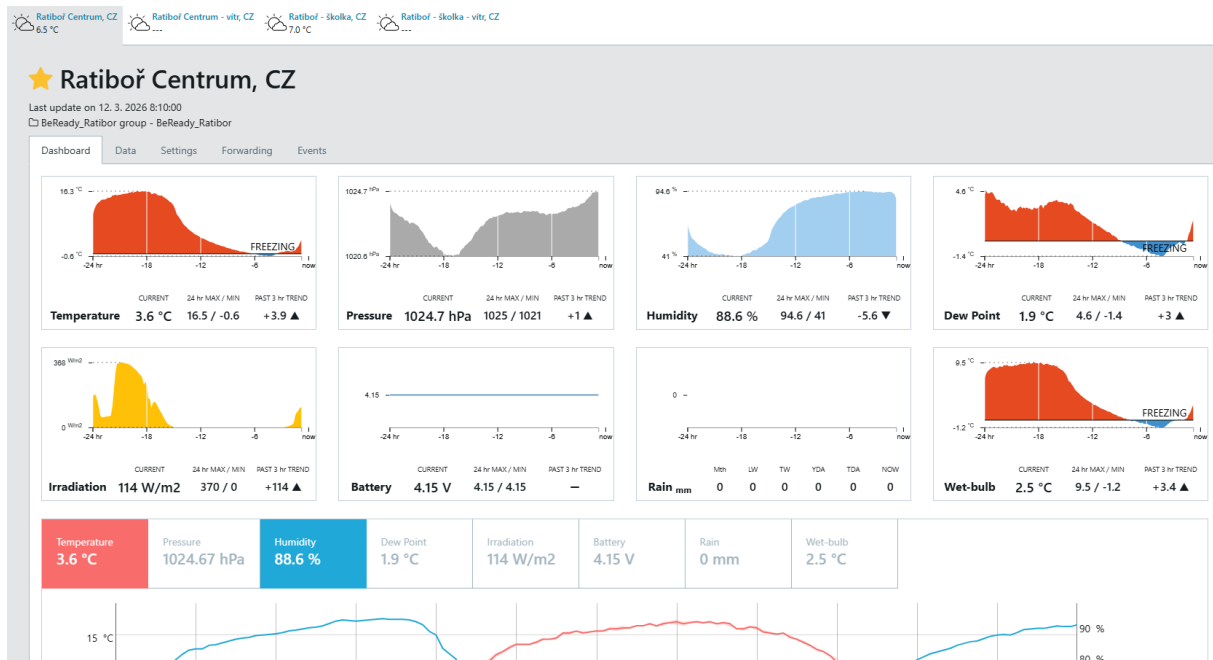


Fig. 9 Data from the Ratiboř Center weather station source: <https://weather.allmeteo.com/#/ws/2406LW053> on March 12, 2026

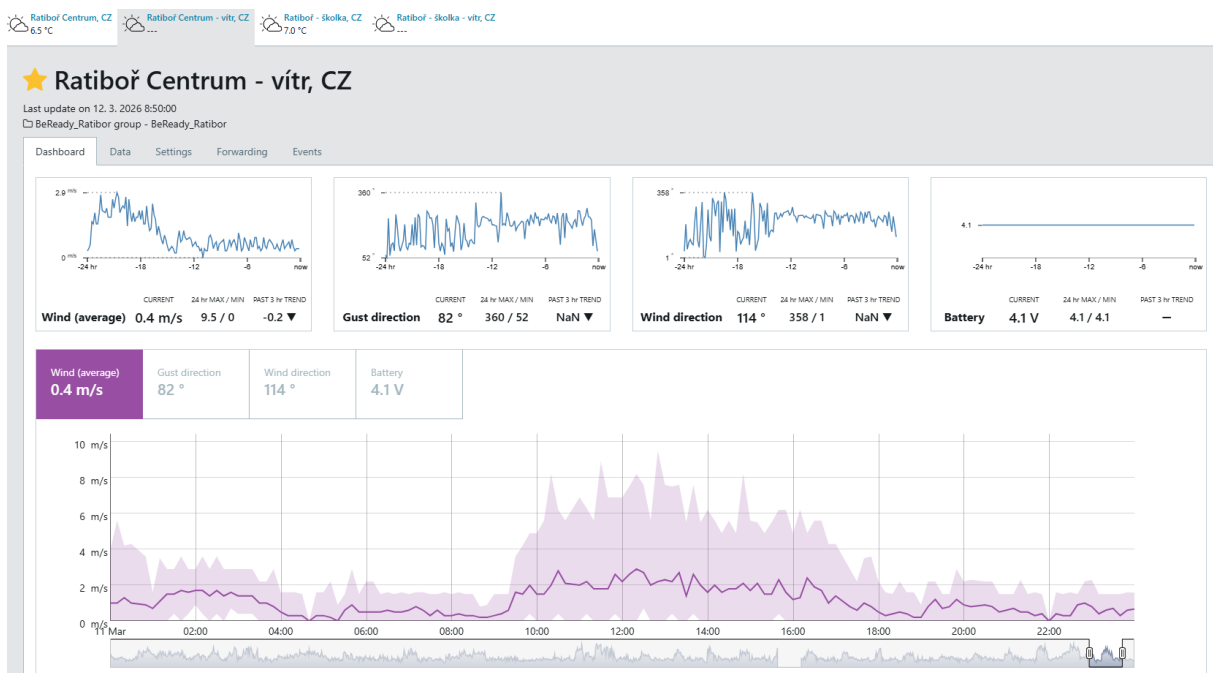


Fig. 10 Data from the Ratiboř Center weather station - wind, source: <https://weather.allmeteo.com/#/ws/2406LW053> on March 12, 2026

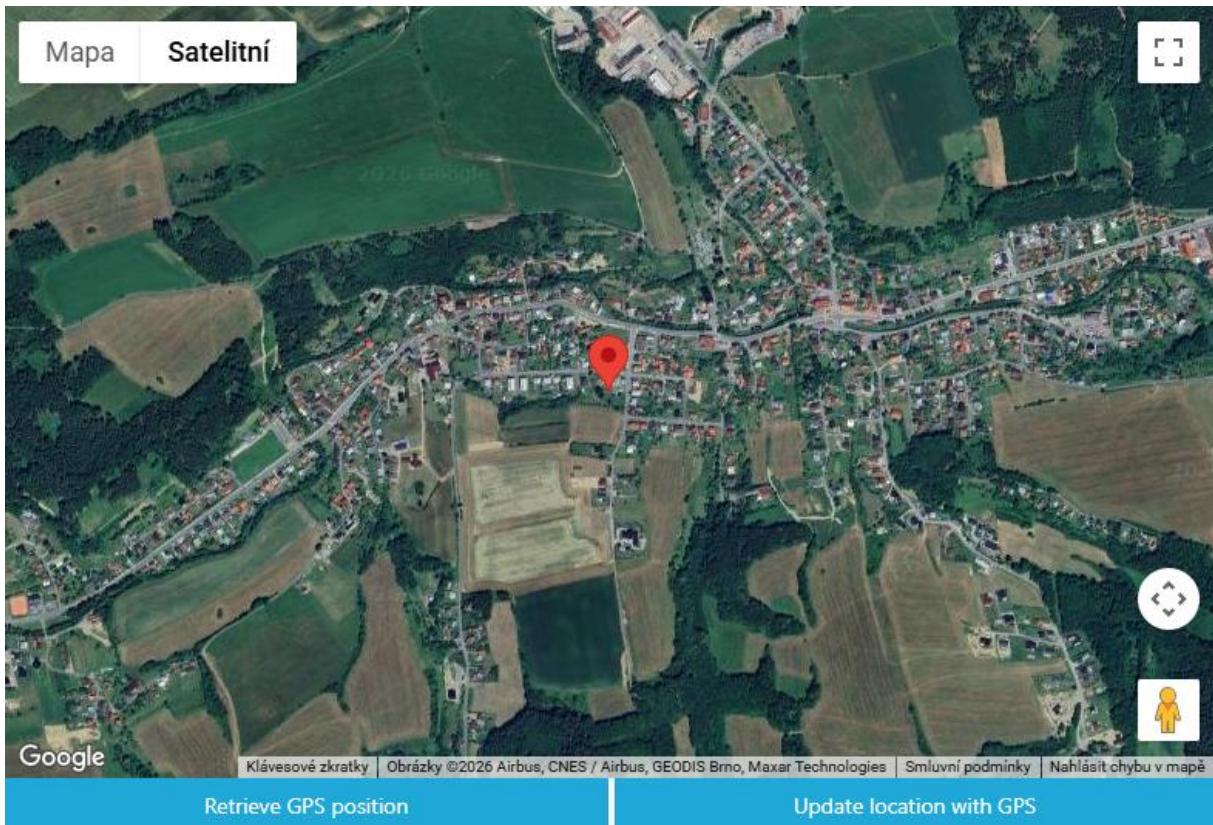


Fig. 11 Location of the weather station in the Ratiboř Kindergarten garden

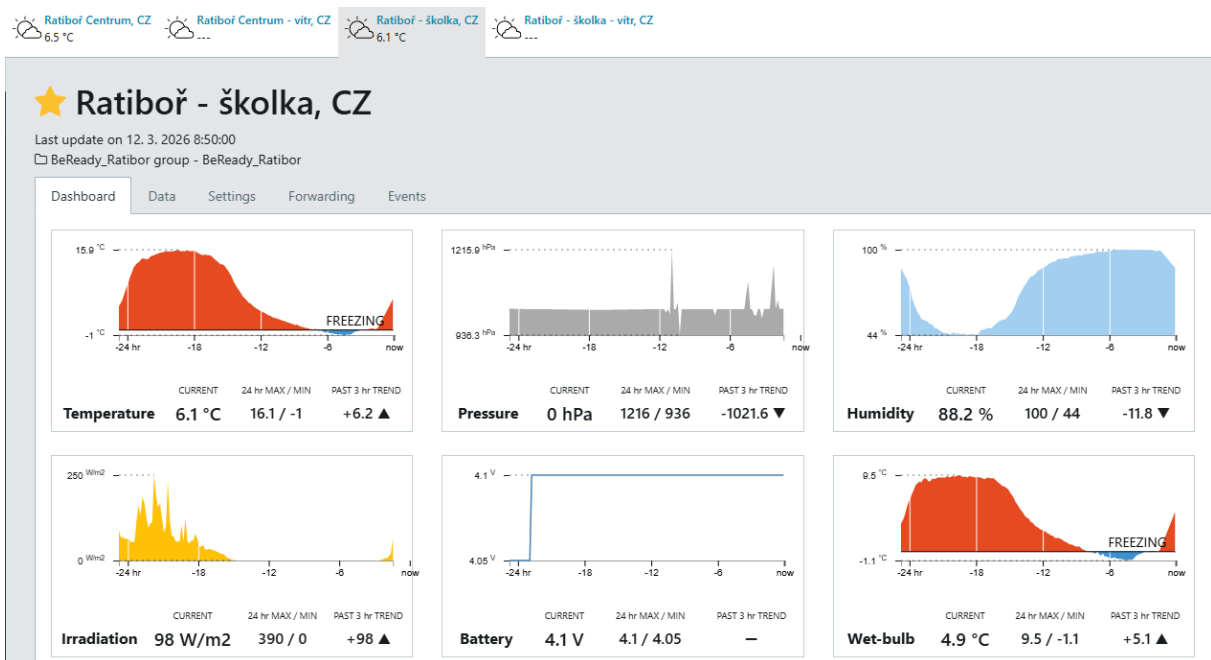


Fig. 12 Data from the Ratiboř Kindergarten weather station source: <https://weather.allmeteo.com/#/ws/2406LW053> on March 12, 2026

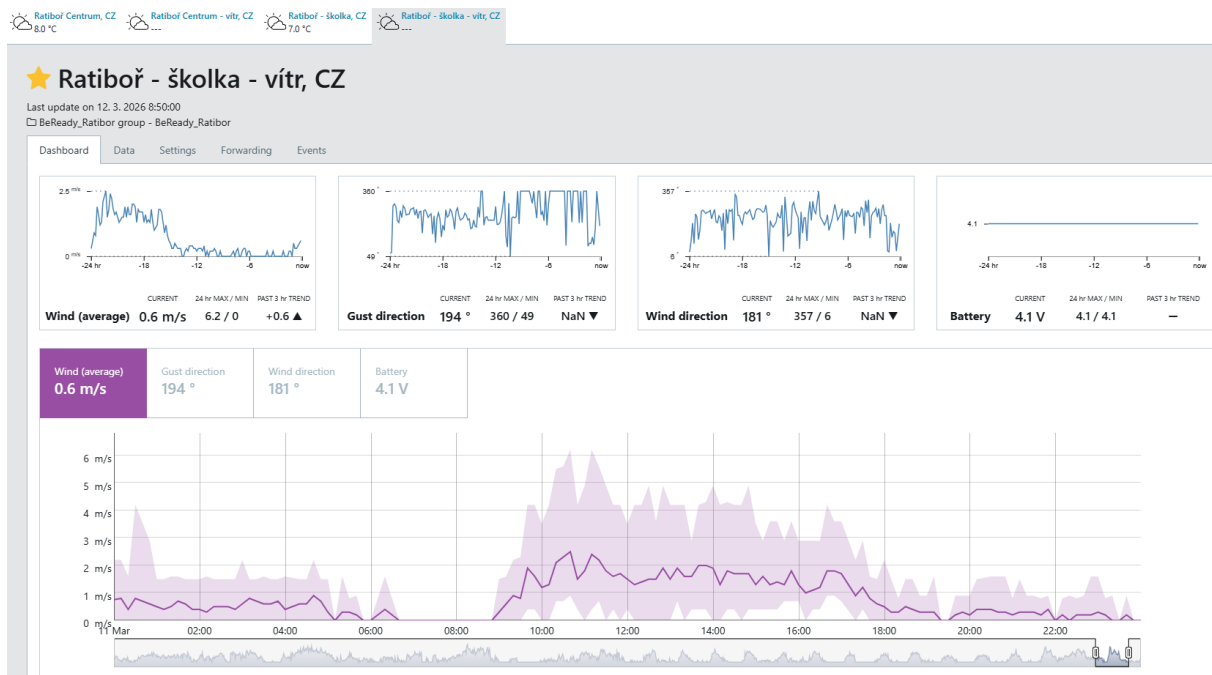


Fig. 13 Data from the Ratiboř Kindergarten weather station - wind, source: <https://weather.allmeteo.com/#/ws/2406LW053> on March 12, 2026

## Implementation of the action plan

The implementation of the action plan will be continuously monitored by the municipal leadership and the administrators of individual projects. Monitoring will focus primarily on checking the fulfillment of specified activities, adherence to the schedule, and the drawdown of financial resources.

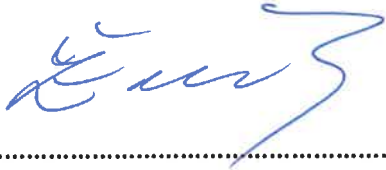
Evaluation will take a simpler form, mainly as a regular informative report to the municipal council. It will assess whether the implemented measures contribute to reducing the heat stress in the selected locations and whether they correspond to the current needs of the municipality.

An additional source of information for evaluating the impacts of the measures will also be data from the local weather stations installed in the Ratiboř municipality, which allow for monitoring the development of microclimatic conditions in different types of environments. Comparing data from individual locations can contribute to a better understanding of changes in temperature conditions and to the continuous evaluation of the effectiveness of implemented adaptation measures.

The action plan will be updated as needed, approximately in a 3–5 year horizon, or earlier based on the experiences from the implementation of individual measures.

The Local Action Plan for the Prevention and Mitigation of Risks and Vulnerabilities of Urban Heat Islands 2026–2028 for the Municipality of Ratiboř was approved by the Municipal Council at its meeting on March 17, 2026, by Resolution No. 3b/Z23/26.

In Ratiboř



Martin Žabčík  
Mayor



Michal Mrlina  
Deputy Mayor